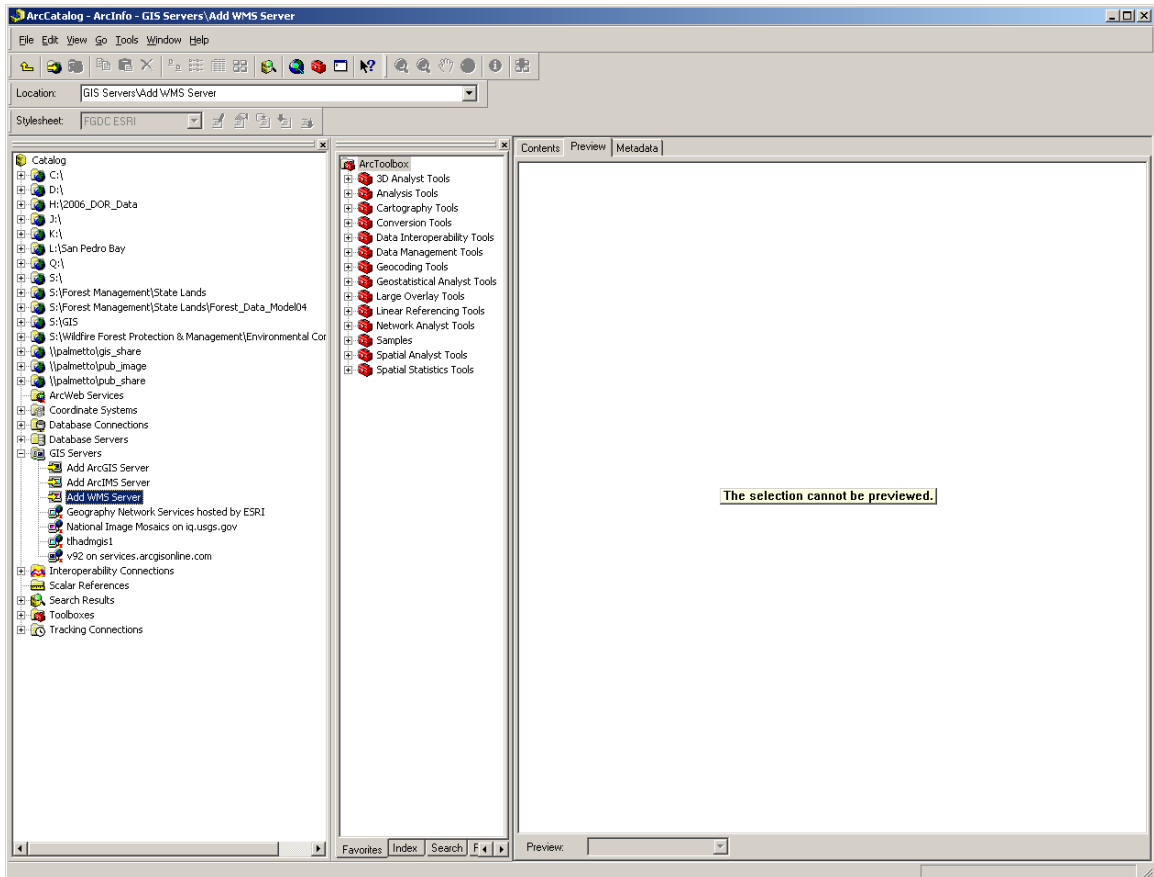


# National Image Mosaics at the USGS

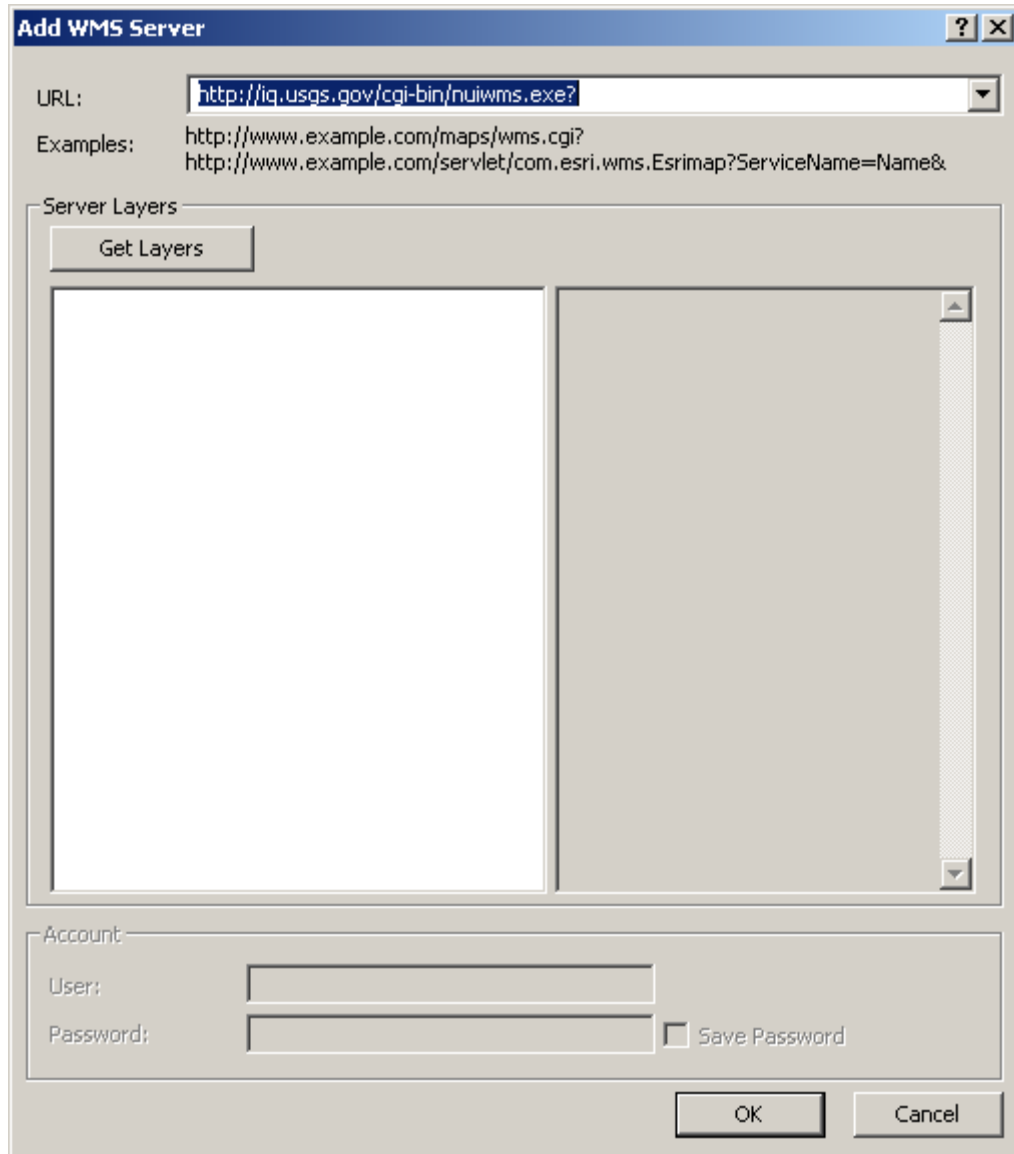
The USGS provides high resolution imagery (down to 3 inches in places) for the entire state United States. Most of Florida is available at sub-meter resolution, with recent (2006) fly dates. There a few places with no coverage, such as a few panhandle counties This imagery is available for the United States through a Web Mapping Service (WMS) server which you set up through ArcCatalog. Instructions are as follows:

## Connecting to the National Image Mosaics WMS Server

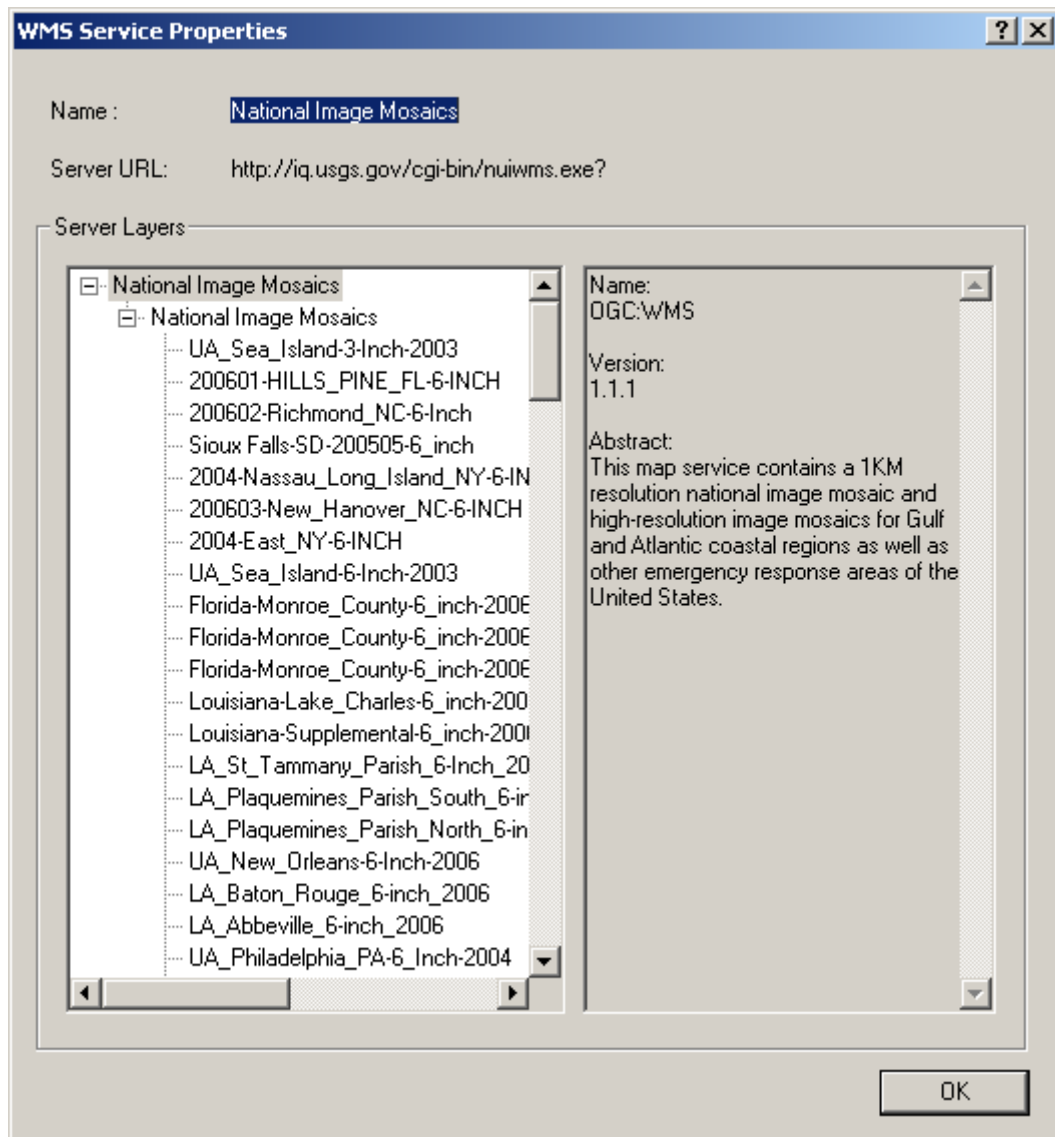
1. Double-click the ArcGIS Servers folder in the Catalog tree and double-click the Add WMS Server:



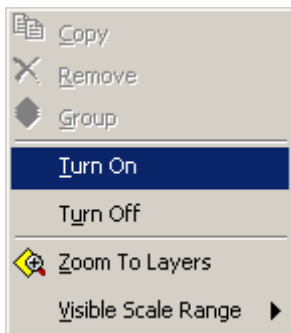
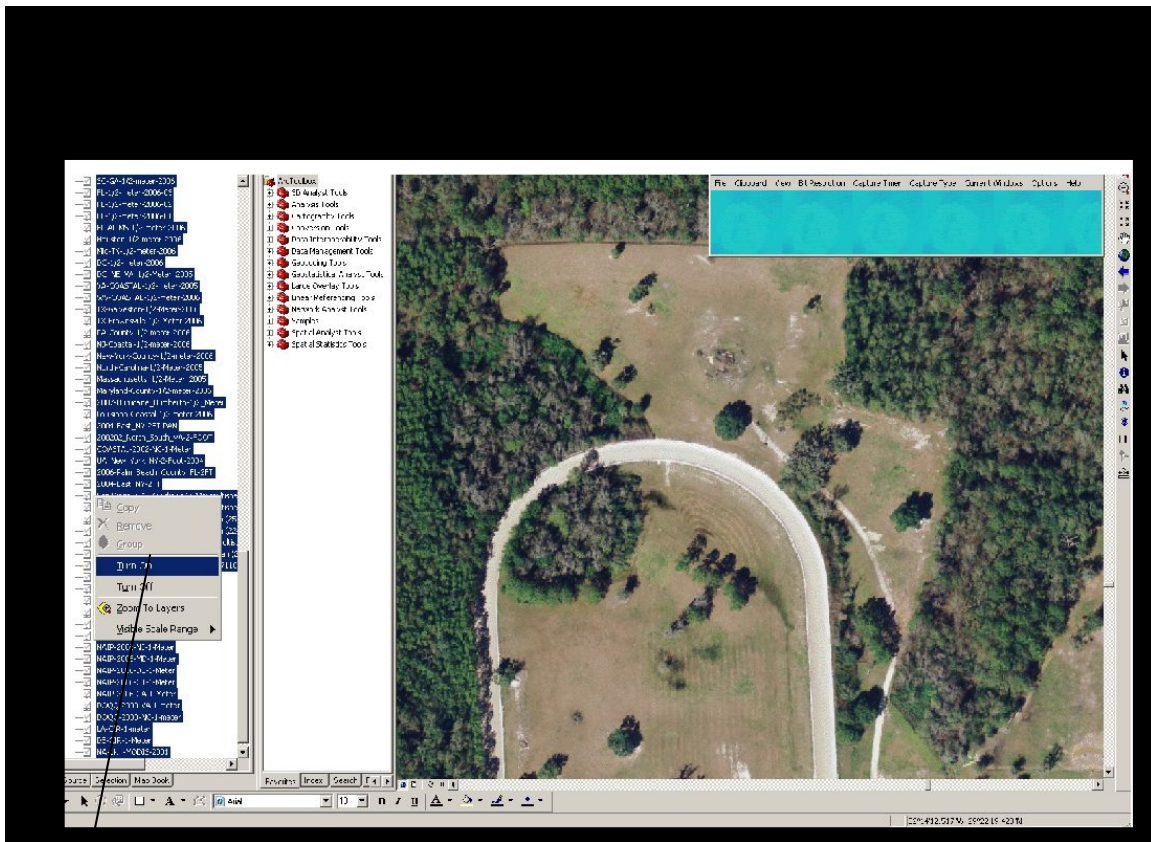
2. In the dialog box that appears, type the URL “**http://iq.usgs.gov/cgi-bin/nuiwms.exe?**” in the URL text box of the “Add WMS Service” dialogue box. (include the question mark but not the double quotation marks). This will create a connection to the server on which the service is running:



3. Double-click the server connection to see the WMS service it contains.  
When you look inside a WMS server in ArcCatalog, you'll only see one service.  
You don't see multiple services as you do with ArcIMS or ArcGIS servers:

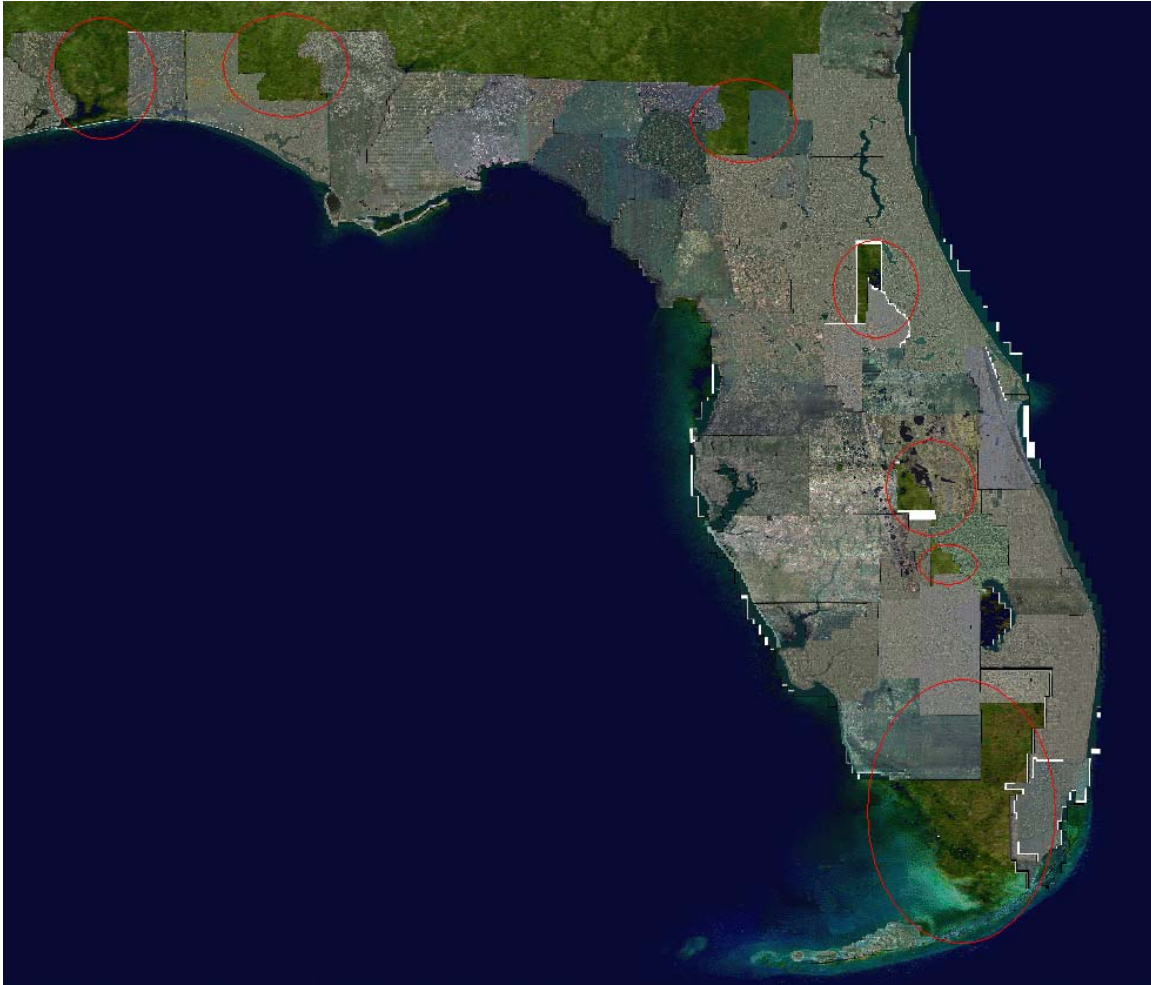


4. Add the WMS service into ArcMap by either dragging and dropping from ArcCatalog or from the ArcMap Add Data dialog box. Next Click on the first image, scroll to the bottom of the list, hold down the shift key and click on the last image so that all of the images are selected. Then right click on the selected images and select Turn on to turn on all the images. The Web Mapping Service should now appear in the view window.



As you zoom in, resolution will increase. The resolution in this Web Map Service is very similar to the quality available on Google Earth.

This image is a screen grab of the actual web mapping service. The circled areas have no imagery as of March 2008.



**Scott Crosby**  
Forestry Supervisor  
II  
Etoniah Creek State  
Forest  
Office: 386/329-  
2552