

## Minnesota SAF Policy and Legislative Committee

The Policy and Legislative Committee of the Minnesota Society of American Foresters takes responsibility for anticipating, identifying, and defining opportunities, problems and issues related to forest resources, and communicating those to the Minnesota SAF membership. The Committee does not make natural resource/forestry policy. Rather, it provides relevant science-based information to policymakers and the media at the national and local level through carefully developed position statements. The Committee also recommends modification to, reaffirms, or terminates existing Minnesota SAF position statements, as appropriate.

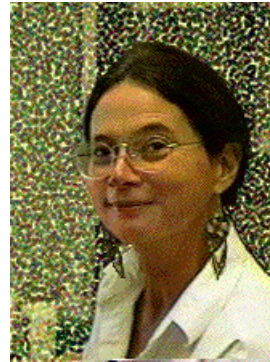
Minnesota SAF position statements are consistent with the *Forest Policy Principles* and position statements of the National SAF. They can make a measurable difference to developing legislation and to media coverage related to natural resource issues.

The current Minnesota SAF position statements are listed below. To download a .pdf version of a position statement, click on its title.

For more information contact the Policy Chair

Lynn Sue Mizner  
Principal State Planner  
Minnesota DNR – Div. of Forestry  
1200 Minnesota Ave. S.  
Aitkin MN 56431

[lynn.mizner@state.mn.us](mailto:lynn.mizner@state.mn.us)



## Minnesota SAF Position Statements

[2006 MN SAF Position Statement – Off Highway Vehicles](#)

[2003 MN SAF Position Statement – Short Rotation Woody Crops](#)

[1998 MN SAF Position Statement – Canada Lynx](#)

**SAF promotes policies that:**

1. Encourage conservation of, or investment in, forest resources to satisfy future expectations,
2. Resolve conflicts about forest uses and forest land allocations to make future investments more secure,
3. Promote the equitable distribution of forest benefits to strengthen public support for forest resource conservation, and
4. Increase cooperation between and among foresters and forestry institutions throughout the world who are developing mutually beneficial approaches to these challenges.

The Society's position-taking procedure assures analysis of forestry issues that is science-informed and policy-relevant. Position statements are developed at the national, regional, or unit level and are approved by the Society's governing bodies before being adopted. Current SAF positions are available for inspection on our policy page.

[Click here to visit the National SAF Policy Homepage](#)